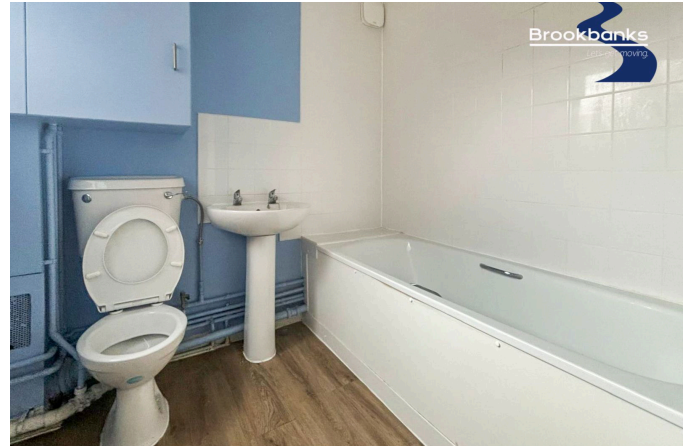


Robina Court, London Road, Swanley, BR8

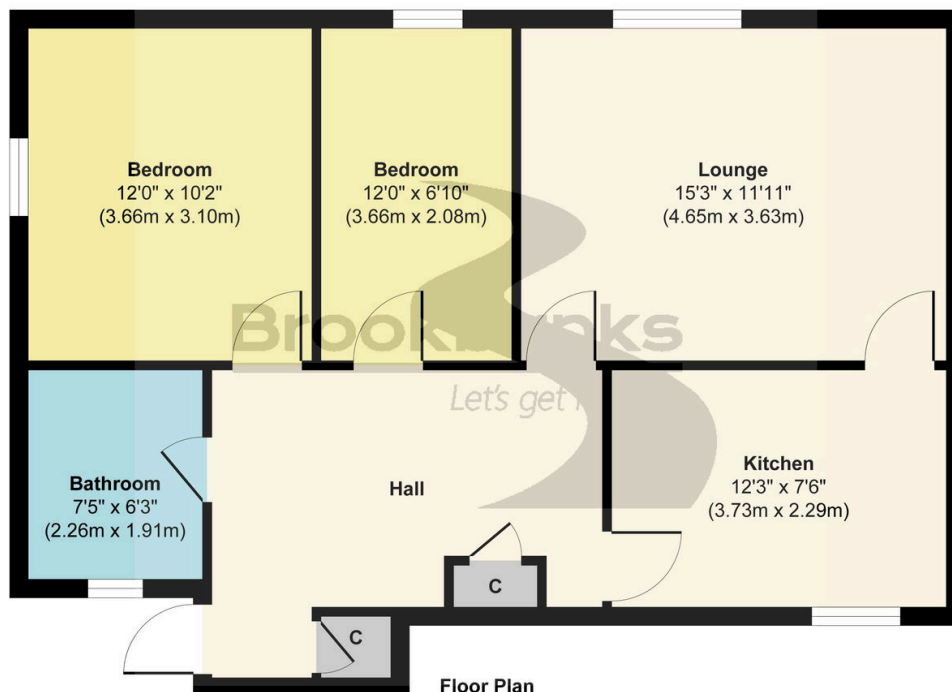
£240,000

🛏️ 2 🍳 1 🚗 1



Spacious two-bedroom ground-floor flat in a popular block with excellent road access. Features include a large lounge, kitchen, two bedrooms, bathroom, and garage en bloc. Requiring some updating, this property is offered with no forward chain, making it an ideal choice for first-time buyers or investors.

- Generous two-bedroom ground-floor flat within a highly sought-after block
- Spacious lounge area, ideal for relaxation or entertaining, with large windows bringing in natural light
- Two well-proportioned bedrooms, each providing comfortable space for furnishings and personal touches
- Added benefit of a private garage en bloc, perfect for secure storage or parking
- No forward chain, making for a hassle-free buying process and quicker completion
- Excellent road links, offering convenient access to local amenities and transportation routes
- Separate kitchen with ample counter space, ready for updates to suit personal taste and style
- Functional bathroom with potential for modern upgrades
- Set within a well-maintained block known for its quiet, community-friendly atmosphere
- Ideal as a first home with room for personalization or as a rewarding investment property with strong rental appeal



Approx. Gross Internal Floor Area 692 sq. ft / 64.28 sq. m

Illustration for identification purposes only, measurements are approximate, not to scale.

Produced by Elements Property